

Acetone Package Kit for 1.25" Process Chamber

Components

1. Pin Spanner Tool (# 8770-58)
2. Pin Spanner Knurl Nuts (# 8760-01-B)
3. Teflon® O-Ring for 1.25" Chamber (# 8770-51/T)

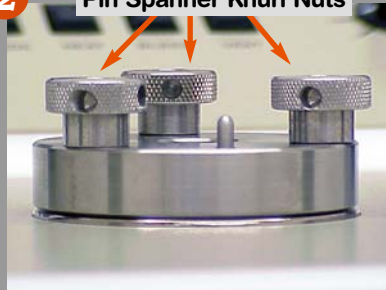
1



Pin Spanner Tool (# 8770-58)

2

Pin Spanner Knurl Nuts



Pin Spanner Knurl Nuts (# 8760-01-B)
Chamber Lid (not included)

3

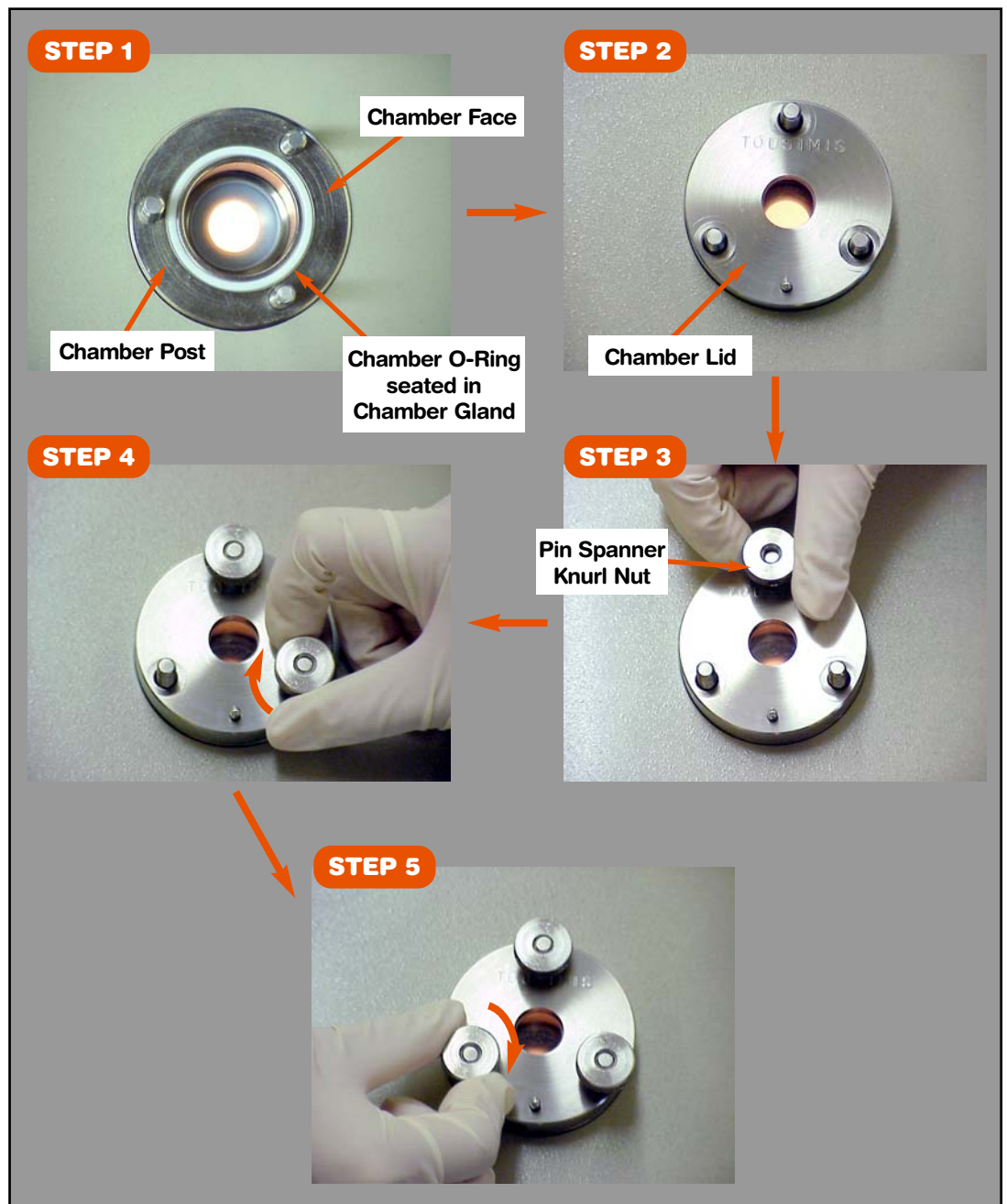


Teflon O-Ring for 1.25" Chamber
(# 8770-51/T)

Securing Process Chamber

Chamber Sealing Procedure

1. Prior to placing Chamber Lid onto chamber face, be sure that Chamber O-Ring and surrounding chamber surface is clean and moisture free (NO Grease).
2. Carefully align chamber lid holes over chamber posts and slowly lower Chamber Lid onto chamber face.
3. Carefully place the 3 Pin Spanner Knurl Nuts onto each appropriate Chamber Post and turn in a clockwise direction until flush with chamber (finger tight).



Securing Process Chamber

4. Insert the Pin Spanner (#8770-58) Tool into the side hole of each Pin Spanner Knurl Nut and gently turn each knurl nut firmly in a clockwise direction.



NOTE:

Never scratch the chamber viewing port window - this could weaken it and may cause it to crack under pressure. Before you insert the Wafers/Die, inspect the chamber for cleanliness and dryness - The chamber face must be moisture free prior to sealing lid.



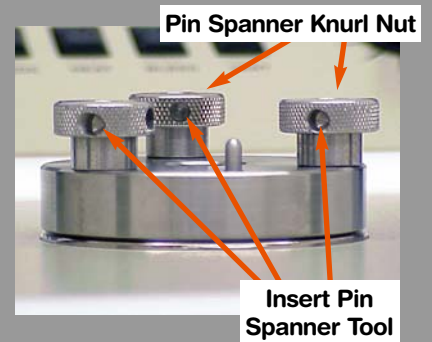
NOTE:

There is no need to over-tighten knurl nuts with Pin Spanner Tool. Only firm gentle force required to make seal.

NEVER
OVER-TIGHTEN OR
USE ALTERNATIVE
TIGHTENING TOOL.



Pin Spanner Tool (# 8770-58)



Pin Spanner Knurl Nut

Insert Pin Spanner Tool

STEP 6



STEP 7



STEP 8

